

## End User Advisory Notice

**Immediate Action Required**

As part of 3M Personal Safety Division's ongoing commitment to delivering high-quality safety equipment, we are notifying our end users of the following information related to the breathing tubes referenced below that may be in your possession or control.

### Affected Products:

- 3M™ Heavy Duty Breathing Tubes SC-BT-56-ASB, SC-BT-56-ASB-L, SS-BT-55, SC-BT-55-L, SS-BT-44, SC-BT-44-L

### Issue:

We have recently found that a limited number of breathing tubes, sold in certain Powered Air Respirator kits or separately as replacement parts, may have been shipped from 3M in a damaged condition.

### Impact assessment:

To assess the potential impact of the issue on safety, affected tubes were tested to the appropriate European standards.

### Powered filtering devices incorporating a helmet or a hood ("Loose fitting"):

When tested to EN 12941:1998+A2:2008 for these systems, they continued to meet their TH classifications as stated in their user instructions.

### Powered filtering devices incorporating a mask ("Tight fitting"):

When affected tubes were tested in "power-on" mode" with masks to the European standard EN 12942:2008+A2:2008, they continued to meet the TM3 classification.

When tested in "power-off" mode to the European standard EN 12942:1998+A2:2008, they provided protection to the TM2 classification. Power-off mode may only be used where specified by local regulation.

### Pre-use checks:

The 3M product user instructions include details of end-user checks that should always be performed on system components prior to use.

These include a visual inspection of the breathing tube to check for any signs of damage. Any damaged tubes should therefore have been removed from use during the pre-use checking process.

The affected stock numbers (SKUs) are listed in Appendix 1. Other 3M Breathing Tube part numbers are not affected by this issue.

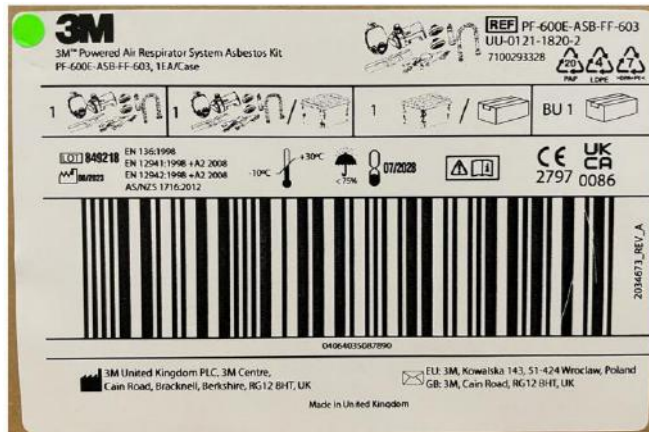
### Action Required:

**We request that all breathing tubes in your control are checked for signs of damage.** The breathing tube should be bent to ensure it is flexible, and inspected for damage including tears, holes, or cracks. Please see Appendix 2 for examples of damaged tubes.

Damaged tubes should be removed from use. Contact your authorised distributor for replacement.

### Replacement Product

We have introduced additional inspections before releasing further breathing tubes and kits to the market. The outer shipper case label of the products that have been subject to these additional inspections will be marked with a green sticker as shown in the example image below, for a period of 8 months from the date of this letter.



Example of shipper case label with green sticker. Details on shipper case label will vary depending on the product.

If you have any further questions, please contact your local 3M distributor.

Thank you for your continued support.

3M remains committed to providing quality products and services to our customers. We apologize for any inconvenience that this situation may cause you. We appreciate your continued support of 3M Personal Safety products and services.

**Appendix 1: List of SKUs containing affected breathing tubes mentioned above.**

Please check your stock for these products purchased under 3M OR Scott Legacy SAP IDs.

3M SAP IDs	3M XP	Scott Legacy SAP ID	Material Description
7100265213	XP100231552	5563799	3M™ Heavy Duty Breathing Tube SC-BT-56-ASB for PF-602E-ASB
7100265025	XP100220779	5064039	3M™ Heavy Duty Breathing Tube SC-BT-56-ASB-L for PF-602E-ASB
7100265224 7100293330	XP100221694	5064580	3M™ Powered Air Respirator System Starter Kit, PF-619E-ASB
7100265217 7100293328	XP100231594	5564593	3M™ Powered Air Respirator System Asbestos Kit, PF-600E-ASB-FF-603
7100265216 7100293329	XP100147345	2030459	3M™ Powered Air Respirator System Asbestos Kit, PF-600E-ASB-FF-602
7100265215 7100293327	XP100147337	2030458	3M™ Powered Air Respirator System Asbestos Kit, PF-600E-ASB-FF-601
7100265214 7100295035	XP100231602	5564594	3M™ Powered Air Respirator System Asbestos Kit, PF-600E-ASB-FF-302
7100236824	XP100231560	5564453	3M™ Heavy Duty EPDM Breathing Tube, SS-BT-44
7100265243	XP100147030	2029864	3M™ Heavy Duty EPDM Breathing Tube, SS-BT-44-L
7100236678	XP100231578	5564454	3M™ Heavy Duty EPDM Breathing Tube, SS-BT-55
7100265244	XP100148509	2031279	3M™ Heavy Duty EPDM Breathing Tube, SS-BT-55-L
7100232759	N/A	N/A	3M™ Powered Air Respirator System Ready to Use Kit, PF-600E LIK

Now discontinued affected Scott™ legacy SKUs containing EPDM PF80cm/PF100cm breathing tubes			
N/A		5064077	HOSE PF 80 ANGLE SCOTT
N/A	XP100221702	5064586	PROFLOW SC ASBESTOS PM (160)
N/A	XP100147360	2030461	PROFLOW2 SC ASB VISION/M (160)
N/A	XP100147352	2030460	PROFLOW2 SC ASB VISION/S (160)
N/A	XP100221686	5064579	PROFLOW2 SC ASB.+ PF10 (160)
N/A	XP100147014	2029859	PROFLOW SC 160 FM3

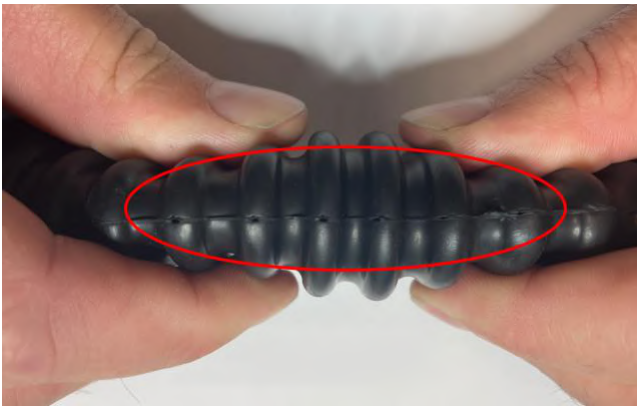
**Appendix 2: Examples of damaged breathing tubes**



**Example 1**



**Example 2**



**Example 3**